



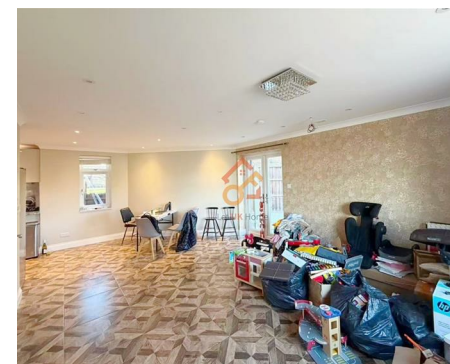
Let **UK** Home

4 Bedrooms

House

Located in London

£3,900 Per Month



info@letukhome.co.uk

<https://www.letukhome.co.uk/>

01795 358 886



Lilac Gardens London

W5 4LQ



Let UK Home are excited to offer this stunning four-bedroom House located in Ealing, London.

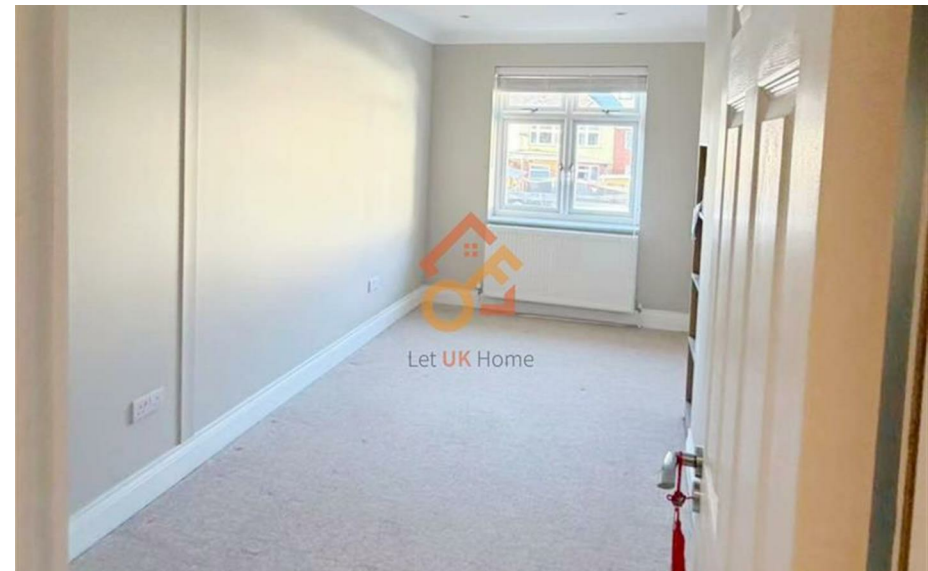
This house is divided into three levels. The ground floor has an open-plan kitchen, dining area, living room, and a toilet; the first floor has 2 bedrooms, a study room (which can be used as a bedroom), and a bathroom; the second floor is a spacious bedroom with an en-suite and ample storage space. In addition, the property includes a parking space.

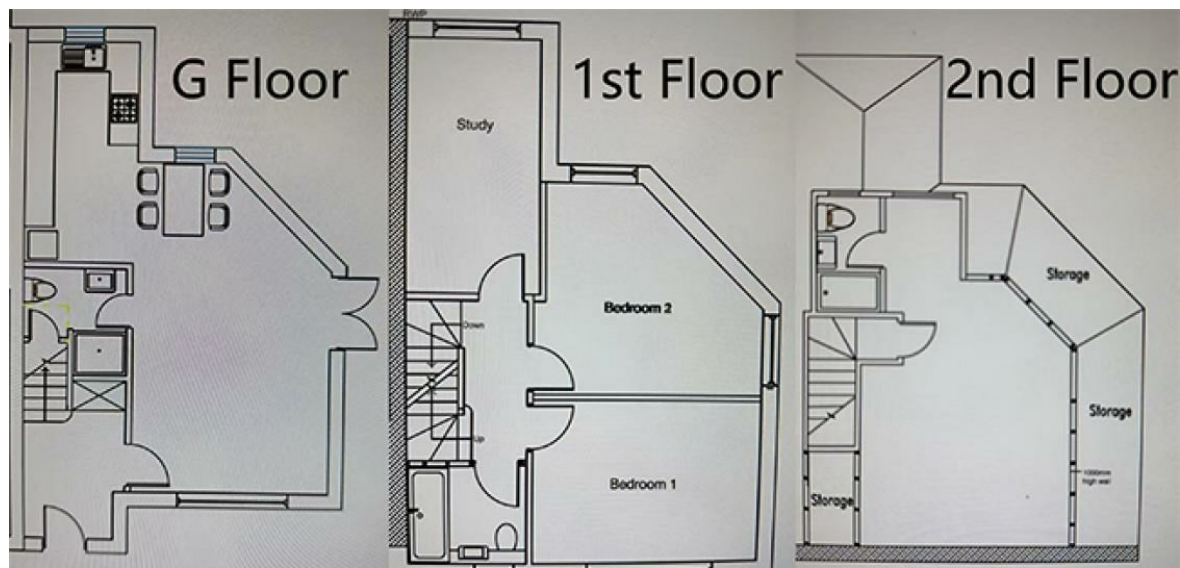
The house is surrounded by many well-known green spaces. Walpole Park and Pittshanger Manor are within easy reach. Green spaces such as Ealing Common and Lamas Park are scattered around. You can enjoy the pleasure of walking in nature every day. Walking to Dickens Square, you can encounter exquisite shops and trendy cafes. Japanese desserts at WA Café, special dishes at Rayuela Spanish Restaurant and other diverse food options are abundant. The Ealing Jazz Festival held every year in Walpole Park continues the cultural tradition of the region, offering both leisure and cultural life.

Lilac Gardens London

£3,900 Per Month

- House
- Green Space
- Parking Space
- Close to Shops





Total floor area

130 square metres



Let **UK** Home

3F 2 Eastbourne Terrace

Paddington

London

W2 6LG

01795 358 886

info@letukhome.co.uk

Council Tax Band:

Local Authority:

Agents Note: Whilst every care has been taken to prepare these particulars, they are for guidance purposes only. All measurements are approximate and are for general guidance purposes only and whilst every care has been taken to ensure their accuracy, they should not be relied upon and potential buyers/tenants are advised to recheck the measurements.

| Energy Efficiency Rating | | |
|---|-------------------------|-----------|
| | Current | Potential |
| Very energy efficient - lower running costs | | |
| (92 plus) A | | 94 |
| (81-91) B | 86 | |
| (69-80) C | | |
| (55-68) D | | |
| (39-54) E | | |
| (21-38) F | | |
| (1-20) G | | |
| Not energy efficient - higher running costs | | |
| England & Wales | EU Directive 2002/91/EC | |

<https://www.letukhome.co.uk/>